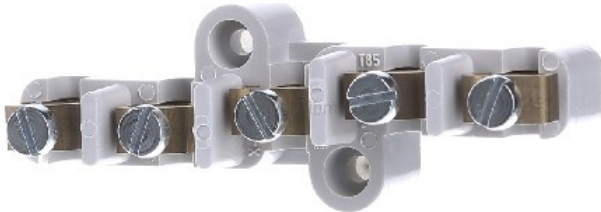


**Terminal block - Power distribution block 5-p screw clamp WK 100 KLS-10q**



**Spelsberg**  
WK 100 KLS-10q  
46051001  
4013902354443 EAN/GTIN

**8,40 USD** excl. VAT\*\*  
plus shipping



15-16 days\* (USA)

Terminal block WK 100 KLS-10q number of poles 5, rated current 57A, screw connection type, screw mounting type, total number of connections 5, number of connections < 6 mm<sup>2</sup> 0, number of connections 10 mm<sup>2</sup> 5, number of connections 16 mm<sup>2</sup> 0, number of connections 25 mm<sup>2</sup> 0, number of connections > 25 mm<sup>2</sup> 0, number of connections < AWG 6 0, number of connections AWG 6 0, number of connections AWG 4 0, number of connections AWG 2 0, number of connections AWG 4/0 0, number of connections 250 kcmil 0, number of connections > 250 kcmil 0, connection terminal, Ui=400V / 690V, 5x10qmm, for K15, K3 K4-EK boxes

**YOUR ADVANTAGES**



**WORLDWIDE TRADE**  
Corporate video eibmarkt®



**99% CUSTOMER SATISFACTION**  
> 500,000 customers worldwide



**DHL TRACK & TRACE**  
Shipment tracking



**COMPLAINTS HANDLING**  
Obliging and 100% safely



**25 YEARS OF EXPERIENCE**  
In worldwide mail order



**ORDER LIVE CHAT**  
With order history



**SHORT DELIVERY TIME**  
Warehousing



**REFUND**  
Within 14 days



**DATA PROTECTION**  
Guarantee

© 1997-2024 eibmarkt.com GmbH - Kemmlerstrasse 1 - 08527 Plauen - Germany

**eibabo®** and **eibmarkt®** are registered trademarks of EIBMARKT® GmbH holding company ([www.eibmarkt.de](http://www.eibmarkt.de)). eibabo® is a company of eibmarkt.com GmbH. eibmarkt.com GmbH is a 100% subsidiary of EIBMARKT® GmbH holding.

\* Note on delivery time: Day = Monday to Friday, no public holiday in Bavaria or Saxony. Goods are also delivered on Saturdays (DHL).

\*\* Payment methods may vary from country to country. All prices plus shipping and excluding customs duties or other additional costs (import sales tax) for deliveries outside the EU.

\*\*\* Savings compared to RRP = the manufacturer's recommended retail price. RRP is the price recommended to retailers by the manufacturer, importer or wholesaler as a resale price to the customer. The RRP is also referred to as the list price and is defined as the highest possible price that a buyer would pay for a specific product before any discounts (Source of gross list prices: Germany).

**eibabo®** the Smart Home technology shop  
**eibabo®** electronics cheap online order  
**eibabo®** electric appliances buy online

